

DOI: 10.5281/zenodo.20321988

EVIDENCE-BASED APPROACHES IN THERAPEUTIC MASSAGE PRACTICE

Sakhno Viktor Aleksandrovich^{1*}

¹Apple Pharm LLC, sakhno.viktor@bk.ru

Received: 07/04/2026
Accepted: 08/05/2026

Corresponding Author: Sakhno Viktor Aleksandrovich
(sakhno.viktor@bk.ru)

ABSTRACT

Massage therapy has become a popular tool in therapeutic care, which is now an integral part of evidence-based medical care. Recent studies highlight the growing importance of using scientific evidence, clinical knowledge, and patient-centered care in therapeutic massage practice to maximize therapeutic effectiveness and healthcare outcomes for patients. Therapeutic massage with evidence has been clinically proven to be of great value for the treatment and care of musculoskeletal disorders, chronic pain conditions, stress-related illnesses, sports injuries, and rehabilitation processes. As of now, massage therapy can be used in conjunction with other treatments to benefit physical functioning, decrease pain, foster relaxation, and facilitate recovery (Field, 2016). In recent times, therapeutic massage is becoming more relevant in the context of modern healthcare systems because of the growing need for alternative methods of pain management and complementary therapies. There is research evidence that massage therapy can have positive effects in the areas of pain management and functional improvement, and quality of life, in various patient populations, including those experiencing chronic low back pain, neck disorders, osteoarthritis, and neurological disorders (Crawford et al., 2016). Moreover, more and more health care institutions are incorporating massage in their rehabilitation programs, integrative medicine practices, and in supportive patient care services. Although increasing acceptance, there are issues with standardizing treatment protocols, consistency of clinical evidence, and professional regulation. However, there is a growing body of scientific evidence supporting therapeutic massage and its contribution to integrative health care systems (Miake-Lye et al., 2019). Looking forward, there are several areas where therapeutic massage is likely to continue evolving and developing further. Advanced clinical studies, customization of therapeutic massage, interdisciplinary cooperation, and integration into healthcare policy are expected to see further development. In the future, advanced clinical research, personalized therapeutic massage, interdisciplinary cooperation, and integration with healthcare policies are expected to further develop therapeutic massage's role in modern healthcare practice.

KEYWORDS: Evidence-Based Practice (EBP); Therapeutic Massage; Clinical Massage Therapy; Manual Therapy; Pain Management; Rehabilitation and Recovery; Integrative Healthcare.

1. INTRODUCTION

Since ancient times, therapeutic massage began in China, Egypt, India, and Greece, and has been in use with human beings since then. Traditionally, massage therapy has been used to help ease pain, enhance physical health, relax the body, and heal naturally. The traditional practices have been mainly based on cultural knowledge, belief, and experience, and not on scientific research for many centuries. The rapid development of the science of healthcare and evidence-based medicine, however, has turned therapeutic massage from a traditional complementary therapy into a more formalized and clinically accepted healthcare movement.

Over the past couple of decades, the adoption of complementary and nonpharmacological methods for managing pain, stress disorders, and musculoskeletal disorders has grown in both popularity and interest. This change has been largely driven by concerns about the chronic use of medications, especially opioids and other pain medications, which can have side effects and be addictive. Consequently, attention has turned to developing treatments that are more holistic and have less of an effect on patients' bodies, and are more likely to provide acceptable outcomes than traditional medication-based treatments (Finch, 2014). In this context, there is a growing amount of interest in therapeutic massage as an adjunctive treatment in the management of pain, rehabilitation, and integrative health care practice.

Evidence-based practice (EBP) is becoming more important in the modern healthcare environment, and it is a process that combines the best available evidence-based research, clinical expertise, and patient preferences when deciding on the treatment. This has had a profound impact on how massage therapy has evolved, inspiring practitioners and healthcare professionals to look for scientifically backed ways to make massage therapy more effective and patient-friendly. Field (2016) reported that research into massage therapy has proliferated greatly over the last 20 years and has shown the benefits of massage in relation to pain, stress reduction, circulation, muscle recovery, and psychological well-being. The results of these studies have led to the increasing acceptance of therapeutic massage in rehabilitation centers, sports medicine clinics, hospitals, and multidisciplinary healthcare facilities.

The use of therapeutic massage in modern health care systems is another sign of the growing global demand for the use of complementary and integrative medicine. Patients are increasingly

seeking complete and patient-centered care, which takes into account their physical and emotional well-being. The integrative health care model encompasses a blend of traditional medicine and scientifically validated complementary practices to enhance the patient's entire health care, quality of life, and treatment. Wu et al. (2017) highlighted the importance of massage therapy (and other complementary therapies) in the field of integrative pain management because of its potential for decreasing pain, enhancing functional movement, and producing emotional balance.

Although therapeutic massage is increasingly popular and accepted, issues of standardisation in clinical practice, training of therapists, therapeutic protocols, and consistency of scientific evidence to support the effectiveness of therapeutic massage remain. There are still questions about the validity of studies on massage therapy, as there is some variation in the methods used, and some studies do not have adequate methodology. As a result, the need for good clinical research and evidence-based review that will increase the credibility and professional status of massage therapy in health care systems is still ongoing. Recent evidence-based assessments have also helped in the understanding of the therapeutic value of touch-based interventions and their relevance in contemporary healthcare settings, as noted by Garrett & Riou (2021).

Additionally, the number of systematic reviews, evidence maps, and clinical guidelines is growing, which has improved the capacity of health care practitioners to determine the effectiveness and safety of massage for different health conditions. Miake-Lye et al. (2019) pointed out that there are increasing numbers of studies that have shown the beneficial effects of massage therapy in pain management and identified areas in need of further clinical evidence. The developments are part of a broader shift to evidence-based therapies that can meet current healthcare standards and patient expectations.

The purpose of this article is therefore to critically review evidence-based methods in therapeutic massage practice and discuss the scientific basis, physiological mechanism, clinical application, rehabilitative benefit, and incorporation of massage therapy into modern health care systems. The article also covers some existing problems, future directions, and recent trends in therapeutic massage using evidence-based practices. The study aims to provide a thorough review of the existing literature and clinical evidence to illustrate the increasing significance of therapeutic massage as a scientifically

validated and patient-oriented healthcare intervention.

2. FOUNDATIONS OF EVIDENCE-BASED PRACTICE IN THERAPEUTIC MASSAGE

Evidence-Based Practice (EBP) is a systematic approach to healthcare decision making that combines the best available scientific evidence, clinical expertise, and patient values to maximize treatment outcomes. In the world of therapeutic massage, EBP is crucial for ensuring that massage procedures are patient-centred, evidence-based, safe, and effective. With increasing attention on evidence-based healthcare, the therapeutic massage profession has changed from a more traditional and experience-based practice to a more research-based clinical practice. Accountability, treatment effectiveness, and patient safety are all increasing in importance in health systems, and therapists are increasingly being called upon to implement evidence-informed practices with a focus that is aligned with contemporary clinical practice.

EBP has evolved from the much larger body of research that is known as evidence-based medicine, which focuses on utilizing current and reliable research findings to inform health care interventions. In the therapeutic massage field, there are instances when the practitioner needs to critically review scientific studies, clinical guidelines, systematic reviews, and outcomes to aid in treatment planning and clinical decision making, which is referred to as evidence-based care. Finch (2014) noted that evidence-based complementary medicine is critical to the present paradigm of chronic pain management in providing safe, evidence-informed, and outcome-driven health care interventions. This will assist in closing the gap between the old and the new therapeutic processes and the modern medical care systems.

There are three core principles that are the foundation of evidence-based therapeutic massage: science, clinical knowledge, and patient care. Such parts contribute to the effectiveness of massage therapy interventions and encompass responsiveness to individual patient needs.

The first pillar (scientific evidence) includes incorporating the results of high-quality clinical research, randomized controlled trials, systematic reviews, and evidence maps into therapeutic decision-making. With scientific evidence, practitioners can decide on which massage therapy is best suited for certain ailments like musculoskeletal disorders, chronic pain, stress management, and rehabilitation. The rising number of clinical studies

related to massage therapy has helped to give greater credibility and professional status to massage therapy in healthcare settings. Therapist consistency, standardized massage techniques, and accurate descriptions of massage procedures, however, are also important for the reliability of massage research. Tosta Maciel et al. (2019) noted the need for better research standardization to increase the quality of the evidence found in clinical trials and improve their reproducibility, as there are many parameters that are not reported consistently in research on massage therapy.

The second pillar is clinical expertise, which is the knowledge, clinical skills, and professional judgment acquired by massage therapists through their education, training, and clinical experience. A medical professional's experience allows him to accurately diagnose patient conditions, choose treatment methods, customize treatment to each patient, and track the progress of treatment. Successful therapists can often detect contraindications and understand patient factors and adjust treatment accordingly. Clinical skill, combined with scientific evidence, makes evidence-based therapeutic massage, so that treatment is tailored and not just "on protocol.

The third pillar of care is patient-centred, acknowledging that the patient's preferences, goals, beliefs, comfort levels, and expectations are all important in the treatment process. Patient-centered approaches involve working together with the patient to formulate a treatment plan that is tailored to their physical, emotional, and psychological needs. Lebert et al. (2022) outlined massage therapy as a holistic method for treating chronic pain, which is person-centred, emphasizing personal care, empathy, communication, and engagement with the patient. This is another component of evidence-based practice, recognising that successful therapeutic outcomes are dependent on more than just clinical interventions and that patient satisfaction, trust, and therapeutic relationships play a part.

Therapeutic massage's integration into healthcare highlights evidence-based practice's importance. Integrative Healthcare is a multidisciplinary model combining conventional therapies with evidence-based complementary treatments. Therapeutic massage is now common in hospitals, rehabilitation centers, pain clinics, sports medicine programs, and long-term care facilities. Garrett and Riou (2021) found positive support for touch-based therapies. This integration reflects a trend prioritizing treatment options beyond medication, patient-centred care, and teamwork among medical

professionals.

Another key point about evidence-based therapeutic massage is the importance of standardized clinical decision-making. Standardisation will promote consistency, safety, accountability, and effectiveness across health care settings. Using standardized assessment tools, documenting interventions, and following evidence-based and outcome evaluation protocols help improve massage therapy quality. McParlin et al. (2022) highlighted the need for a therapeutic alliance and professional touch in musculoskeletal care. They noted that structured, evidence-based interactions between patients and practitioners can positively impact outcomes. Standardized clinical protocols also improve teamwork and communication between massage therapists and other healthcare workers, supporting better patient care.

Although great strides have been made in therapeutic massage using evidence-based therapy, there are still a number of challenges to overcome when implementing it. Therapist training, methodological differences between studies, small sample sizes of large clinical trials, and methodological differences between the treatment techniques may be obstacles to the development of clinical guidelines that are universally accepted. However, the increasing scientific research to document the benefits of massage therapy is making it more evident to all that massage therapy is valued in an evidence-based healthcare system. With ongoing research, the clinical and professional legitimacy, efficacy, and integration of therapeutic massage in health care are further anticipated to increase.

Table 1: Core Components of Evidence-Based Therapeutic Massage Practice.

Component	Description	Clinical Importance
Research Evidence	Scientific studies and clinical trials	Supports safe treatment
Clinical Expertise	Therapist skill and experience	Improves outcomes
Patient Preferences	Patient goals and values	Enhances satisfaction
Outcome Evaluation	Monitoring treatment response	Ensures effectiveness



Figure 1: The Three Pillars of Evidence-Based Therapeutic Massage Practice.

3. PHYSIOLOGICAL AND SCIENTIFIC MECHANISMS OF THERAPEUTIC

MASSAGE

Therapeutic massage is often associated with its physiological and biomechanical action on several body systems. In recent years, scientific research on the effects of massage interventions on musculoskeletal systems, neurological activity, circulatory function, immune responses, and perception of pain has increased. It is important to understand these mechanisms to assist in incorporating therapeutic massage into evidence-based health care practice. Current studies show that massage therapy can elicit measurable responses in the body, which can be used to help ease pain, improve function, manage stress, and enhance rehabilitation.

Therapeutic massage has a significant impact in the musculoskeletal system. Common massage techniques for manipulation of soft tissues, reducing tension in muscle and improving flexibility include effleurage, petrissage, friction, trigger point therapy, and myofascial release. Massage pressure acts on the muscles, stretches muscles, gets rid of stiffness, increases tissue elasticity, improving the range of motion and function of muscles. The role of massage therapy in musculoskeletal rehabilitation was also reported by Hernández-Reif et al., (2014) who noted that massages led to a decrease in lower back pain and an increase in mobility. Likewise, Moraska et al. (2015) proved that trigger point massage therapy had a positive effect on the reduction of pain and the increase in muscular responsiveness in patients with myofascial pain symptoms.

Other health benefits of massage are related to lessening muscle pain and tissue damage after exercise. Massage therapy is commonly used in sports rehabilitation and physical recovery to aid the recovery process after intense physical activity. Crane et al. (2012) concluded that massage therapy blunted inflammatory signaling following exercise-induced muscle damage, indicating that massage may act to aid in cellular recovery processes and minimize inflammation-related discomfort. The results have helped to advance the application of therapeutic massage in sports medicine and rehabilitation to improve sports performance and recovery.

Therapeutic massage has a significant influence on the nervous system, as well as on the musculoskeletal system. Massage activates receptors in the skin, muscles, and connective tissue that activate neural pathways involved with relaxation and pain modulation. It is said that one of the main effects of massage on the nervous system starts by stimulating the parasympathetic system, which in

turn stimulates relaxation, decreases stress responses, and restores physiological balance. Massage has been linked to decreased heart rate, lower blood pressure, better mood, and decreased anxiety levels due to decreased SNS activity.

Other theories of pain modulation are also closely related to the neurological mechanisms of massage therapy. The gate control theory of pain explains that the stimulations provided by massage can help to block the pain signals from reaching the central nervous system, and therefore can decrease the sensations of pain. In addition, massage therapy can activate the production of endogenous opioids, serotonin, dopamine, and other neurochemical mediators that play a role in pain management and emotional well-being. Sluka and Chiu (2016) highlighted that manual therapy interventions have an impact on pain neuroscience by altering peripheral and central mechanisms that underlie pain, thereby helping to reduce the patient's sensitivity to pain and enhance their comfort. Similarly, Bialosky et al. (2018) mentioned that the nature of manual therapy is very complex and has a neurophysiological action, moving beyond mechanical effects, emphasizing the importance of cognitive, psychological, and neurobiological factors in therapeutic results.

The therapeutic massage also has an effect on circulatory and also lymphatic functions in the body. Rubbing and rhythmic movement of soft tissues can improve the circulation of blood by promoting vasodilation and venous return. The greater the blood flow, the more oxygen and nutrients are supplied to tissues and metabolic wastes and toxins are removed. Better circulation promotes healing of tissues, muscle recovery and proper body activity. In addition, massage promotes lymphatic drainage that helps to lower fluid retention, swelling and tissue congestion. Improved lymphatic flow can help to boost the immune system and aiding recovery from injury or inflammation.

Massage therapy's hormonal and immune system changes have been the subject of scientific study. Massage therapy has been shown to lower stress hormone levels like cortisol and boost hormone levels linked to relaxation and emotional health, such as serotonin and dopamine. Rapaport et al. (2016) studied the connection between massage therapy and immune function and found that massage therapy is likely to have a positive effect on immune and endocrine responses. The physiological effects have helped to increase awareness of massage therapy as a whole body treatment that can impact both the physical and psychological systems.

Therapeutic massage science is also highly related to the field of manual therapy as a whole. Manual therapy is a hands-on therapeutic techniques that have the ability to modulate soft tissue, joints, muscles, and neural structures for the purposes of enhancing physical function and decreasing pain. Therapeutic massage has many physiological mechanisms that are similar to other manual techniques, such as biomechanical stimulation, neural modulation, and psychological relaxation responses. Manual therapeutic interventions have been shown to have both local and systemic physiological effects, which can lead to better rehabilitation outcomes and patient well-being.

Although there have been advances in the knowledge of the physiological mechanisms of massage therapy, there are still many things that need to be studied to determine the exact biological processes involved in the healing effects of massage therapy. Clinical effects of massage may vary as a result of differences in massage techniques, time of massage, patient characteristics, and research methodology. Despite this, there is considerable evidence that therapeutic massage can be effective at inducing physiological changes that can aid recovery, decrease pain, induce relaxation, and enhance integrative healthcare.

Table 2: Physiological Effects of Therapeutic Massage on Body Systems.

Body System	Physiological Response	Therapeutic Outcome
Musculoskeletal	Muscle relaxation	Reduced pain
Nervous System	Parasympathetic activation	Stress reduction
Circulatory	Increased blood flow	Improved recovery
Immune System	Reduced inflammatory markers	Enhanced healing

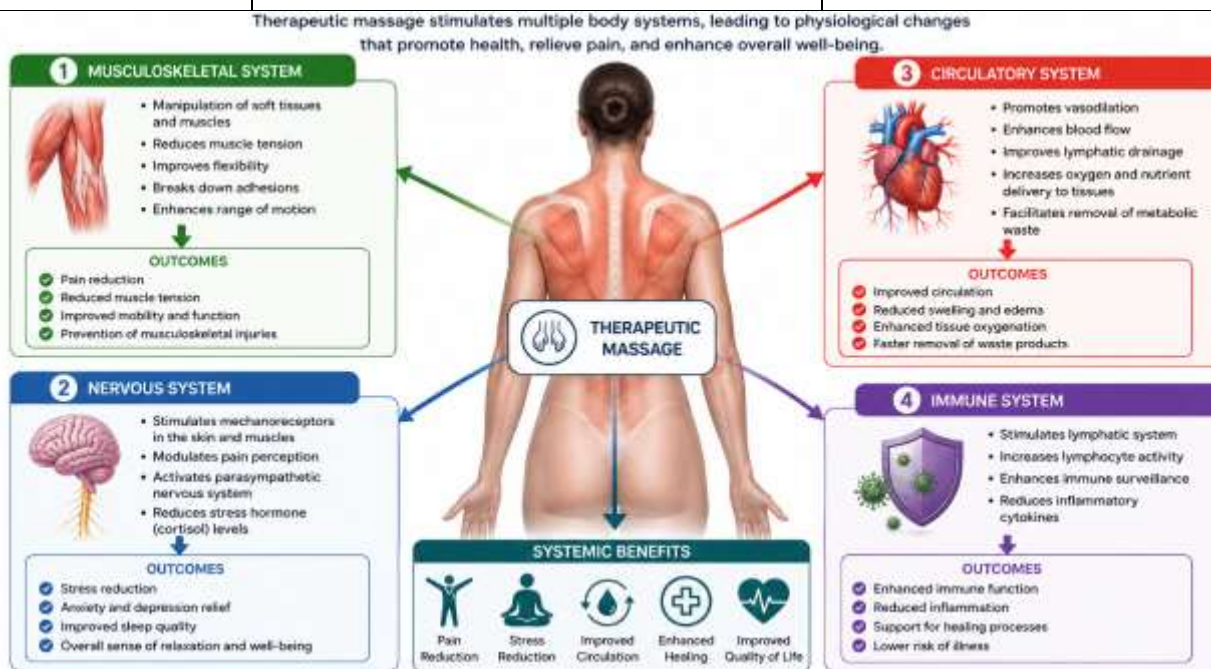


Figure 2: Physiological Mechanisms and Systemic Effects of Therapeutic Massage.

4. EVIDENCE-BASED APPLICATIONS IN PAIN MANAGEMENT

Therapeutic massage is still one of the most important uses of massage therapy in modern times of health care. Chronic pain conditions are

experienced by millions of people across the world, and they have been linked to poorer quality of life, physical disability, psychological distress, and higher health care costs. With increasing concerns about addiction to pain medications, side effects of opioids, and the efficacy of traditional pain medications, there

has been a surge of interest in alternative methods of pain management over the past several years, including nonpharmacological and evidence-based treatments. It has become apparent that therapeutic massage has proven to be a valuable complementary therapy for different types of pain, particularly musculoskeletal pain, chronic low back pain, neck pain, osteoarthritis, and myofascial pain syndromes.

Therapeutic massage is one of the more thoroughly studied massage techniques for dealing with chronic low back pain. Low back pain is an important cause of disability worldwide and can be a major disability for the individual's work and day-to-day activities. Adverse pain intensity reduction, improvement in mobility, and functional outcomes are clinical findings indicating that massage therapy is effective in people suffering from nonspecific low back pain. In a Cochrane review, Furlan et al. (2015) found that massage therapy was beneficial for subacute and chronic low back pain, especially when combined with exercise and patient education. In the same way, Kumar et al. (2017) found that massage therapy helps in the alleviation of pain and functional improvement in people suffering from nonspecific low back pain and hence recommended this as an evidence-based method in the conservative management of LBP.

The acceptance of massage therapy in the management of low back pain is further endorsed by clinical guidelines, which suggest that noninvasive treatment strategies such as massage therapy should be the first choice when treating low back pain. In the recommendations for evidence-based management of acute, subacute, and chronic low back pain, Qaseem et al. (2017) suggested that nonpharmacological therapies should be used, such as massage. These suggestions underscore the growing awareness regarding therapeutic massage as a safe and patient-focused therapy that can help decrease pharmaceutical use.

Therapeutic massage has also been proven to help with cervical musculoskeletal disorders and neck pain. Poor posture, work stress, muscle tension, or degenerative conditions all often go hand in hand with neck pain, limiting mobility, and causing prolonged discomfort. Any massage techniques that focus on the muscles or soft tissue around the neck can help to decrease muscle tension, increase blood flow, and increase the range of motion. A Cochrane review of mechanical neck disorders (Ezzo et al., 2014) reported some evidence for the use of massage therapy for short-term pain relief and functional improvement. Furthermore, Sherman et al. (2014) found beneficial results with patients treated for

chronic neck pain with therapeutic massage, with a decrease in pain intensity and an improvement in physical functioning.

Osteoarthritis is another area of great importance for evidence-based massage therapy for which there is evidence of therapeutic potential. Osteoarthritis is a degenerative joint disease that causes cartilage to break down, become inflamed, pain and affects the ability of the joint to move. Massage therapy can help alleviate pain, increase joint mobility, improve blood flow and help relax a person who is affected. Perlman et al. (2019) showed that for patients with knee osteoarthritis, massage therapy helped to improve their symptoms, such as pain and physical function. This research indicates the importance of using therapeutic massage within a multi-disciplinary management programme for chronic joint conditions.

Therapeutic Massage is also commonly used in the management of general musculoskeletal disorders, as well as specific pain conditions. Musculoskeletal conditions are a wide variety of conditions affecting muscles, tendons, ligaments, joints, and connective tissue. Common symptoms of musculoskeletal pain include functional impairment, muscle tightness, fatigue, and psychological distress. In a systematic review, Bervoets et al (2015) showed that massage therapy was effective in reducing the symptoms of common musculoskeletal disorders in the short-term when compared with no treatment. Similarly, Crawford et al. (2016) highlighted that massage therapy alleviated pain and enhanced functional outcomes in many pain populations, highlighting the clinical importance of massage interventions in musculoskeletal health care.

Another niche but widely adopted massage therapy that can be used in pain management is trigger point therapy. A hyperirritable area in a muscle, which may cause referred or local pain, muscle stiffness, and restriction of movement. The trigger point massage techniques involve applying pressure to these sensitive muscle areas to alleviate tension, improve the function of the muscle, and decrease its sensitivity to pain. According to Moraska et al. (2015), massage therapy interventions have been shown to be a positive treatment for trigger points, leading to better pain relief and muscular relaxation. The results of these studies underscore the therapeutic benefit of specific massage techniques for the treatment of myofascial pain syndromes and chronic muscle pain.

Several physiological and psychological mechanisms have been suggested as the basis for the beneficial action of therapeutic massage in pain

management. Massage therapy can help alleviate pain by enhancing circulation, relaxing muscles, stimulating the parasympathetic nervous system, decreasing inflammatory responses, and modulating pain pathways. Finally, the use of therapeutic touch and patient-centred care can help to support emotional comfort, reduce stress, and enhance psychological well-being, affecting pain perception and treatment outcomes.

Although there is emerging evidence to support massage therapy as a pain management strategy, there are some restrictions. Therapeutic results may be affected by the differences in massage techniques, time of massage, massage therapist skills, and patient

characteristics. There may be differences in massage methods, the length of time the massage is performed, the massage therapist's skills, and patient characteristics, which can affect therapeutic results and make it difficult to compare data between studies. In addition, some studies show short-term benefits with the absence of long-term follow-up. The conclusions from the systematic reviews, clinical trials, and evidence-based guidelines, however, are consistent and poignantly indicate the effectiveness of therapeutic massage as a complementary intervention in the treatment of pain and rehabilitative healthcare.

Table 3: Evidence-Based Massage Interventions for Pain Conditions.

Condition	Massage Technique	Evidence Outcome
Low Back Pain	Deep tissue massage	Reduced pain intensity
Neck Pain	Therapeutic massage	Improved mobility
Osteoarthritis	Swedish massage	Improved joint function
Trigger Point Pain	Trigger point therapy	Muscle tension relief



Figure 3: Clinical Applications of Therapeutic Massage in Pain Management.

5. THERAPEUTIC MASSAGE IN REHABILITATION AND RECOVERY

In today's healthcare environment, therapeutic massage is emerging as an integral part of the rehabilitation and recovery process. Rehabilitation aims to return the person to their highest level of function and mobility after an injury, illness, surgery, or physical stress, and to alleviate pain and maximize

quality of life. Therapeutic massage is becoming a part of sports medicine, orthopedic rehabilitation, neurological care, and post-exercise recovery programs, as healthcare providers continue to focus on noninvasive and patient-centred treatment methods. Massage therapy benefits have been supported by evidence-based research in a variety of patient populations and can include: tissue healing, reduction in muscular tension, improved circulation,

and functional recovery.

One of the most popular uses of therapeutic massage is sports rehabilitation. Muscular fatigue, soft tissue injuries, delayed onset muscle soreness (DOMS), and exercise-induced stress are common ailments in athletes and physically active people that could affect their athletic performance and recovery. A massage before and after physical activity is commonly applied to warm up or cool down muscles, and help with post-exercise soreness and efficiency in getting over the workout. Best et al. (2015) investigated the benefits of sports massage in skeletal muscle recovery after heavy exercise and found that massage interventions may have a positive effect on muscular recovery after heavy exercise and help to alleviate discomfort associated with heavy exercise. These results suggest that massage therapy can be integrated into athletic rehabilitation for better athletic performance and shorter recovery time.

Another area of therapeutic massage with good rehabilitative value is exercise-induced muscle damage. Strenuous exercise can result in micro-tears in the muscles, inflammation, pain, and a diminished ability to perform the muscle's function. There is scientific evidence indicating that massage therapy could decrease inflammatory reactions related to tissue damage caused by exercising. Crane et al. (2012) observed that massage therapy reduced inflammatory signaling after exercise-induced muscle damage, indicating that massage therapy has a physiological effect on tissue repair and cellular repair mechanisms following exercise-induced muscle damage. Massage might help to circulate blood and relax muscles, which could aid in the delivery of nutrients to injured tissues and the elimination of waste products produced by metabolism that can cause pain and tiredness.

Therapeutic Massage is also an important part of orthopedic rehabilitation. In cases of orthopedic injuries and issues, such as fractures, tendon problems, ligament damage, joint disorders, and post-surgical rehabilitation, holistic treatment plans are essential for achieving optimal function and mobility. Massage therapy is often used in orthopedic treatment to alleviate pain, increase soft tissue mobility, decrease scar tissue, and improve circulation around injured tissues. Dryden et al. (2018) highlighted the importance of massage therapy in the field of orthopedic patient care, stating that massage treatments can potentially play a role in managing pain, promoting relaxation, and aiding in the functional recovery of patients undergoing musculoskeletal rehabilitation.

In orthopedic rehabilitation, manual therapy techniques can be applied to the body and are somewhat similar to therapeutic massage techniques. Soft tissue mobilization, myofascial release, deep tissue massage, and friction massage techniques can be used to improve tissue movement and joint function, and are all possible interventions. Loew et al. (2014) studied deep transverse friction massage (DTFM) for tendinitis and discussed the therapeutic effect of DTFM in soft tissue injury and healing. This evidence highlights the clinical relevance of massage techniques and their role in providing orthopedic dysfunction management and rehabilitation outcomes.

Therapeutic Massage is also being used in neurological rehabilitation and supportive care for neurodegenerative diseases, in addition to musculoskeletal rehabilitation. The motor function, muscle rigidity, pain, mobility, and quality of life are often compromised in neurological disorders. Massage therapy can be helpful in easing muscle tension, relaxing the body, increasing circulation, and improving emotional state for people suffering from neurological disorders. Kang et al. (2022) investigated the therapeutic massage for motor symptoms in Parkinson's patients and found that therapeutic massage was effective at improving motor function and symptom management. The results indicate that therapeutic massage can be a useful adjunctive therapy that can be used to support the traditional methods of neurological rehabilitation.

The principles of manual therapy and physical rehabilitation are also well correlated with the rehabilitative effects of therapeutic massage. Hillier and Walmsley (2015) highlighted the benefits of exercise therapy and manual therapy in the management of osteoarthritis and rehabilitation-related conditions. In addition to exercise programs and physiotherapeutic interventions, a massage therapy program can help patients in rehabilitation regain mobility, reduce pain, and improve functional independence. This is a multidisciplinary approach, which is an indicator of the increasing integration of evidence-based alternative therapies into rehabilitation sciences.

In addition, there are several similarities between osteopathic and manual therapeutic treatments and massage therapy in terms of their ability to help the body recover and reestablish a normal range of motion of the musculoskeletal system. Cerritelli et al. (2017) discussed the osteopathic treatment for musculoskeletal pain patients and emphasized the therapeutic efficacy of manual interventions in

improving the physical function and decreasing the pain in patients with musculoskeletal pain. The results highlight the general significance of therapeutic methods that involve touch within the field of rehabilitative healthcare facilities.

Enhancing recovery is a key goal of therapeutic massage therapy. In addition to physical recovery, massage therapy can also play a role in emotional healing by lessening the stress, anxiety, and emotional exhaustion that can accompany an injury or chronic condition. The therapeutic relationship between practitioner and patient may also enhance confidence, motivation, and general adherence to rehabilitation. Therapeutic massage promotes all-around recovery strategies, encompassing physical and psychological healing, to tackle the holistic nature of recovery.

Although there is increasing evidence of the benefits of massage therapy in rehabilitation and recovery, there are some limitations. The results of massage may vary according to the technique, frequency of massage, the qualifications of the therapist, and patient factors. Furthermore, there are inconsistent findings across a number of rehabilitation studies, which tend to have fewer participants and different methodologies. Despite this, the growing body of scientific evidence is strong in advocating that therapeutic massage should be included in evidence-based rehabilitation programs to enhance recovery outcomes, functional performance, and quality of life for patients.

6. THERAPEUTIC MASSAGE IN INTEGRATIVE HEALTHCARE

Today, therapeutic massage is a major part of clinical practice, especially with integrative approaches to health care. Integrative healthcare is a patient-centered approach that includes both traditional and evidence-based complementary healthcare strategies in addressing the physical, emotional, psychological, and social aspects of health. Given the ongoing trend towards holistic patient care in healthcare, therapeutic massage is increasingly seen as a valuable complementary therapy that can positively influence patient outcomes, prompt better quality of life, and aid overall treatment planning.

The use of therapeutic massage in hospitals, rehabilitation and long-term care facilities, and multi-specialty clinics demonstrates the acceptance of complementary medicine in the mainstream health care systems. Massage therapy, traditionally, was thought of as something that was done outside of the realm of conventional medicine. It has,

however, been added to the clinical environment thanks to the growing evidence of its scientific effectiveness. Massage therapy is increasingly being used in rehabilitation clinics, pain management centers, oncology and cancer support services, palliative care centers, sports medicine centers, and wellness programs to enhance patient recovery and well-being.

Therapeutic massage has become a part of health care systems partly due to the increased demand for complementary and nonpharmacological treatment. Many patients want to make choices about their health care treatment beyond symptom relief and want to improve their overall quality of life and well-being. In addition to highlighting the role of massage therapy in integrative pain management, Wu et al. (2017) pointed out that other alternative therapies are also important and can be part of a holistic approach to caring for patients, thereby minimizing the reliance on medication-based therapies. This change is emblematic of the moving winds of healthcare, where emphasis is placed on prevention, patient engagement, and overall health promotion.

One of the core concepts of integrative healthcare and therapeutic massage is the holistic care approach. Holistic healthcare sees a close interplay between the emotional, physical, mental, and social aspects of health and well-being. Therapeutic massage offers a holistic approach to care that alleviates muscular pain, stress, anxiety, emotional tension, and relaxation at the same time. Massage therapy can have positive effects on physiology and psychological health outcomes through physical contact and therapeutic interaction. Garrett and Riou (2021) noted the growing acceptance of therapeutic touch in healthcare settings, noting that it can encourage a sense of emotional comfort, relaxation, and patient-centred healthcare experiences.

Another key element that has contributed to the incorporation of therapeutic massage into the modern health care practice is the patient-centered approach to healthcare. Patient-centered care is focused on patient-centred treatment planning, respect for patient choice, co-decision making, and therapeutic relationships that aim to maximise patient comfort and wellbeing. Therapeutic massage is well aligned with such principles, as it is tailored to each individual and places a focus on communication, empathy, and therapeutic alliance. Lebert et al. (2022) described massage therapy as a person-centred management technique for chronic pain, highlighting the need for personalised care and patient involvement to ensure positive therapeutic outcomes.

In therapeutic massage practice, the therapeutic alliance and professional touch play a crucial role in the context of being patient-centered. The therapist's ability to communicate, trust, feel empathy, and interact well with the patient plays an important role in satisfying the patient and in effectiveness. Therapeutic alliance and touch are key factors in musculoskeletal care that can shape patient experiences, emotional support, and responsiveness to treatment, as highlighted by McParlin et al. (2022). These results indicate that therapeutic massage also has important psychological and relational aspects in the healthcare delivery process, in addition to the physiological aspects.

Elderly care and services that support them also depend on therapeutic massage. Chronic pain, decreased mobility, stress, sleep difficulties, and social isolation are common issues in older adults that can have a negative impact on quality of life. Massage therapy can help to reduce stress, increase circulation, and enhance the emotional health and comfort of older adults in long-term or supportive care. A massage intervention had positive effects on well-being in older adults, which should lead to the use of massage therapy in geriatric and supportive health care areas, as reported by McFeeters et al. (2016).

Another important aspect of integrative healthcare that includes therapeutic massage is interdisciplinary collaboration. The healthcare environment is a multidisciplinary one where doctors, nurses, physiotherapists, psychologists, occupational therapists, massage therapists, and other healthcare professionals all work together to maximize patient outcomes. In these settings,

massage therapists offer unique expertise and knowledge in the fields of soft tissue massage therapy, relaxation therapy, rehabilitation assistance, and pain management. Collaborative care models enhance communication between health care professionals and allow for comprehensive care planning, individualized to each patient.

Additionally, the inclusion of therapeutic massage in healthcare systems also contributes to the efforts to lower the healthcare expenses related to chronic pain management, longer hospital stays, and side effects of treatment with medications. Massage therapy can help patients heal faster, experience less stress, achieve better rehabilitation results, and have a higher level of patient satisfaction through the use of noninvasive and supportive methods of treatment. Additionally, the increasing number of people who use evidence-based complementary therapies demonstrates the rising awareness of the value of patient-centred and holistic healthcare systems in modern medicine.

While therapeutic massage has grown in significance as a tool of integrative medicine, there are some factors that still hinder its acceptance. The availability of and standards for professional regulation, therapist training, reimbursement, and institutional acceptance may restrict access and uniformity of care. Besides, there is a need for more clinical studies on a large scale basis to enhance the scientific evidence of specific massage interventions in different healthcare populations. Despite this, the evidence does clearly support the incorporation of therapeutic massage into the multidisciplinary healthcare system as a complementary and evidence-informed treatment.

Table 4: Roles of Therapeutic Massage in Integrative Healthcare.

Healthcare Area	Massage Application	Expected Benefit
Rehabilitation Clinics	Recovery support	Functional improvement
Elderly Care	Relaxation therapy	Enhanced well-being
Pain Clinics	Manual therapy	Pain reduction
Neurological Care	Supportive therapy	Symptom management

7. TECHNOLOGY, INNOVATION, AND EMERGING TRENDS

The world of therapeutic massage is continually evolving with the ever-present presence of technological advancement and scientific innovation, thus extending the therapeutic massage's role into a new realm of evidence-based healthcare practices.

The incorporation of new technology in massage therapy has helped to make treatments more accessible, improve clinical supervision, implement uniform treatment protocols, and increase research development. The therapeutic massage has been transitioning from standard hands-on and physical methods to more technologically advanced and evidence-based models of care as healthcare systems

transition to digital and patient-centered healthcare approaches.

One of the significant developments in the field is the invention of automated massage systems and robotic massage technology. Automated massage devices come with the programming of massage techniques, vibration, and pressure application, and mechanical stimulation to replicate traditional massage methods. These technologies are becoming more and more used in rehabilitation centers, wellness centers, physiotherapy centers, and within home healthcare to help recover, relax, and manage pain. Paul et al. (2021) studied the health effectiveness of automated massage systems, noting that the massages performed using technology could have positive physiological and therapeutic effects. There are a number of initial benefits that automated systems can provide, such as ensuring a consistent approach to treatment, access, reduction of therapist workload, and the ability to deliver repeated interventions, which would not be physically fatiguing to the therapist.

The advent of robotic and automated massage devices also symbolizes the general trend of digital health care and customized therapeutic treatments. Massage devices are now increasingly integrating artificial intelligence, sensor technology, and machine-learning systems to better control the pressure, adjust the intensity of the massage, and track the patient's reactions during the massage. The innovations could help to create more tailored treatment experiences, as well as rehabilitation and home-care treatments, especially for patients who suffer from chronic pain, mobility issues, or neurological conditions.

Evidence mapping and research synthesis techniques are other significant advances in evidence-based therapeutic massage. Evidence mapping is a method for systematically summarizing and assessing the existing scientific literature to identify patterns, strengths, and areas of knowledge gaps and future priorities in a given area of study. Therapists, researchers, and policy makers in therapeutic massage practice utilize evidence mapping to gain insight into the effectiveness and shortcomings of massage therapy interventions in a range of patient groups and clinical settings. Miakel-Lye et al. (2019) created an evidence map to focus on massage therapy for pain management, which not only showed the growing volume of scientific evidence behind the use of massage interventions but also pinpointed areas that still need to be explored in clinical studies. In the context of integrative health care systems, evidence mapping can be a tool that

helps in clinical decision-making, policy development, and research prioritisation.

Advanced digital health monitoring devices are on the horizon and increasingly relevant to therapeutic massage. Wearable devices, mobile health apps, biometric sensors, and telehealth systems are increasingly being adopted by modern healthcare systems to track patient progress, recovery, and facilitate personalized healthcare delivery. Digital monitoring devices can help therapists track pain levels, muscle recovery, stress reactions, sleep quality, improved mobility, and the effectiveness of massage therapy over time within therapeutic massage environments. These technologies help health care workers gather objective clinical information and assist with evidence-based assessments and outcome evaluation.

Digital health monitoring could also facilitate interprofessional collaboration between health care professionals within massage therapy. Shared patient information allows for the effective coordination of treatment between rehabilitation experts, physiotherapists, doctors, and massage therapists, and enables them to track recovery progress more effectively. Moreover, the use of digital record systems and outcome tracking technology helps to enhance treatment accountability, research standardization, and quality control in treatment delivery.

Another trend that is emerging to influence the future of therapeutic massage practice is personalized therapy models. The concept of personalized healthcare is based on individualized treatment strategies according to patients' characteristics, past medical history, lifestyle, pain patterns, psychological state, and rehabilitation objectives. Therapeutic massage can be tailored to suit individual needs, as massage techniques, pressure, frequency of massage, and therapeutic outcomes can vary from patient to patient. The future of massage therapy is even more promising as practitioners continue to refine their techniques and utilize new assessment tools, digital monitoring systems, and patient data analysis to create personalized massage treatments that can enhance therapeutic outcomes.

With the improvements in technology, there are still a number of issues to address in the implementation and standardisation of new therapeutic massage techniques. Clinical studies may not be readily comparable and reproducible due to differences in treatment protocols, research methods, and reporting. Tosta Maciel et al. (2019) pointed out

that the lack of reporting of massage parameters in clinical trials and the need for methodological consistency and transparency in research. A national reporting system and evidence-based treatment plans are critical to enhancing the science and professional practice of therapeutic massage.

The therapeutic massage therapy field of therapy is projected to have more extensive clinical trials, further studies in the neurophysiology of therapeutic massage, individualized massage rehabilitation plans, and implementation of digital healthcare technologies in the future. There is growing research interest in the biological response to massage therapy such as neurochemical response, inflammatory modulation, and pain neuroscience and psychophysiological interaction. Furthermore, the

increasing role of artificial intelligence (AI) and data analytics in healthcare could be a part of more accurate treatment planning and predictive therapeutic models.

In sum, technology and innovation are contributing more and more to the development of evidence-based therapeutic massage practice. The incorporation of automated systems, digital monitoring devices, evidence mapping approaches, and customised healthcare strategies highlights the continuous advancement of therapeutic massage in contemporary healthcare settings. As science and technology continue to grow, therapeutic massage is likely to become more and more standardized, evidence-based, and part of a multi-disciplinary health care system.



Figure 4: Emerging Technologies and Future Trends in Evidence-Based Therapeutic Massage.

8. ETHICAL AND PROFESSIONAL CHALLENGES IN EVIDENCE-BASED MASSAGE PRACTICE

Although therapeutic massage is becoming more widely accepted in evidence-based and integrative healthcare systems, there are still several ethical and professional issues that impact the development, standardisation, and clinical application of therapeutic massage. The challenges include inconsistencies in treatment approaches, inconsistent education and regulation of therapists, limitations in scientific research, ethical issues regarding patient

care, and safety and evidence issues. Solving these problems is crucial to enhancing the trust and accountability of therapeutic massage in today's healthcare and to making it more integrated in the field.

The most important obstacle to evidence-based therapeutic massage is the absence of therapeutic massage and/or clinical guidelines. Massage therapy refers to various types of massage, such as Swedish massage, deep tissue massage, trigger point massage, myofascial release, sports massage, and therapeutic touch massage interventions. Inconsistencies in the intensity of the pressure, length of treatment, frequency of sessions, treatment technique, and

patient reactions can result in inconsistencies in clinical outcomes and research results. Having no standardized procedures makes it challenging to compare studies, to accurately assess effectiveness, and to develop a universally accepted best-practice guideline.

Standardization plays a special role in scientific research and medical writing. Tosta Maciel et al. (2019) noted that many of the parameters of massage are poorly reported in clinical trials, which hinders replications and makes it hard to draw conclusions based on evidence. There are potential limitations to the scientific quality of massage-related studies due to inadequate reporting of therapeutic techniques, application of pressure, duration of the massage session, and patient characteristics. Therefore, the lack of consistency with regard to methodology is still a significant challenge in the area of evidence-based therapeutic massage practice.

There are also important professional challenges due to differences in the training and qualifications of therapists. There are many variations in the education standards of massage therapists from country to country, institution to institution, and even healthcare system to healthcare system. It is possible that some practitioners provide more in-depth training in clinical practice and/or anatomy, while others might have received less evidence-based education or may not have the same requirements for certification. This variability can have an impact on the quality of treatment, patient safety, clinical performance, and accountability of healthcare professionals. Healthcare professionals in evidence-based practice settings must be able to understand the scientific literature, use evidence-informed decision-making, and integrate with other healthcare professionals.

Within the clinical healthcare environment, therapeutic massage is utilized for clinical reasons, adding to the necessity for clinical competency and regulation. Hospital, rehabilitation, pain clinic, and multidisciplinary healthcare professionals who work with therapists must exhibit healthcare regulation compliance, clinical reasoning, patient communication skills, and professional ethics. For practitioners, it is good practice to treat patients with dignity, respect their confidentiality, seek informed consent, and provide treatment within a scope of competency.

The ethical issues in therapeutic massage practice are closely related to the nature of the therapeutic touch and therapist-patient interactions. Due to the physical nature of massage therapy, practitioners have to have clear professional limits and focus on

the comfort, autonomy, and security of their patients during massage sessions. Ethical concerns can arise with regard to inappropriate behavior, inadequate communication, cultural sensitivity, and/or respecting patient preferences and limitations. In the context of healthcare, Garrett and Riou (2021) discussed the significance of ethical issues and therapeutic interactions, noting the necessity of being professional, up to date with patient trust, and evidence-based.

Another important factor to take into account in evidence-based therapeutic massage is clinical safety. While massage therapy is a safe and effective complementary therapy, there are some techniques that can cause harm if not performed properly or on an inappropriate patient. There may be some contraindications or modifications of interventions to massage therapy for patients with fractures, severe osteoporosis, acute inflammation, cardiovascular instability, infection, deep vein thrombosis, and certain neurological conditions. It is important, therefore, for practitioners to take the time to perform comprehensive patient evaluations, be mindful of any contraindications, and tailor treatment plans to meet patient health needs and clinical needs.

There are ongoing shortcomings in the quality and quantity of evidence for therapeutic massage interventions. Most studies in the field of massage are conducted on small numbers of patients, for short periods of time, with varying methodology and/or limited control groups, which makes it hard to draw definitive clinical recommendations. Despite the use of complementary medicine in pain management, Finch (2014) pointed out that there is a need for more scientific evidence and methodological rigor to increase the integration of complementary medicine in healthcare and its acceptance by professionals. However, the authors of the research paper of Miakel-Lye et al. (2019) highlighted that while evidence for massage therapy's effectiveness as a pain management intervention continues to grow, a significant lack of knowledge about long-term outcomes, optimum treatment regimes, and condition-specific therapeutic effects remains.

Balancing traditional therapeutic practices with expectations of scientific healthcare is another challenge. Therapeutic massage evolved over the years by way of experience and cultural healing practices, while healthcare systems are more and more looking for quantifiable outcomes, documentation, and accountability. This can lead to conflicts where there is a need to follow the clinical requirements of standardization and ensure that the individual therapeutic approach is being applied to

the patient. Although integration via standardization is essential for evidence-based healthcare, too many standardized approaches can reduce the flexibility and personalization that are crucial for effective therapeutic massage practice.

Moreover, healthcare policy, insurance reimbursement policies, and institutional receiving are still affecting the career advancement of therapeutic massage. In numerous health care systems, due to low insurance coverage and a lack of recognition from health care professionals, patients may not be able to receive massage therapy services. In the future, it may help to promote greater integration with the healthcare sector and policy support with greater scientific evidence, and by setting a standard clinical structure. Yet, despite all these ethical and professional issues, therapeutic massage continues to develop as a result of ongoing research, educational progress, and the development of evidence-based practice in the field. Greater synergy between researchers, healthcare providers, educators, and regulatory bodies can contribute to the quality of the research, professionalism, safety in clinical practice, and integration into healthcare. In order to keep therapeutic massage a valid, ethical, and effective part of today's evidence-based healthcare practice, these challenges need to be addressed.

9. FUTURE DIRECTIONS FOR EVIDENCE-BASED THERAPEUTIC MASSAGE

Future directions for evidence-based is in the field of healthcare research, interprofessional working, technological advancement, and patient-centred approaches have important implications for the future of evidence-based therapeutic massage. In the current clinical practice, therapeutic massage is likely to be more important since the shift of focus has moved towards nonpharmacological methods, preventive medicine, and total rehabilitation. A greater number of scientific studies, better integration into the healthcare system, established protocols for massage therapy, and greater acceptance of massage therapy as a valid healthcare intervention around the world, however, will be key to continued growth and professional recognition.

Large-scale clinical trials or high-quality scientific studies are one of the main priorities in therapeutic massage research in the future. While massage therapy is currently accepted as an effective treatment for pain management, rehabilitation, and stress reduction, there is also evidence supporting its effectiveness in musculoskeletal conditions, the quality of many studies is limited due to

methodological issues that include small sample sizes, lack of treatment standardization, and lack of follow-up data. Future clinical trials should be more methodologically sound, have more diverse patient populations, and assess long-term therapeutic effectiveness in a variety of healthcare populations. The scientific evidence behind therapeutic massage is still weak and requires more RCTs and systematic reviews to enhance its scientific credibility and provide evidence-based clinical guidelines.

There will be an increase in research investigating the neurology and psychology behind massage. Future studies could be conducted on the role of massage in the regulation of the nervous system, inflammatory pathways, hormonal responses, immune function, and psychosocial well-being. As neuroscience and rehab science further develop, their impact on understanding the effect of therapeutic touch on physical and emotional health outcomes can be further appreciated. These advances have the potential to enhance precision in treatment and foster greater healthcare integration.

This will also require improved interprofessional working in the future evolution of therapeutic massage practice. Healthcare is becoming more and more multiprofessional and multidisciplinary, with doctors, physiotherapists, occupational therapists, psychologists, nurses, rehabilitation specialists, and complementary healthcare practitioners collaborating to maximize patient outcomes. Massage therapists are projected to play a more active role in team-based health care in the fields of rehabilitation, pain management, neurology, and supportive medicine. The authors of McParlin et al. (2022) underscored the role of therapeutic alliance and professional relationships in musculoskeletal care, underscoring the need for collaboration and patient-centered healthcare.

Interdisciplinary integration can also help to enhance the communication, coordination of care, and shared clinical decision-making for healthcare providers. By working in collaborative practice, massage therapists can offer specific knowledge and services in soft tissue rehabilitation, pain management, stress management, and recovery improvement, which complement the overall therapeutic goals set forth in a multidisciplinary health care plan.

Another large-scale future avenue of evidence-based therapeutic massage is the integration of healthcare policy. In much of the health care sector, massage therapy is still somewhat restricted due to inconsistent regulation, insurance coverage, and different institutional acceptance. Continued

research and evidence of effectiveness could lead to a greater awareness among policymakers and healthcare providers of the role of massage therapy as a cost-effective and effective complementary healthcare treatment. There will be better access to massage therapy at hospitals and rehabilitation centres, as well as in community healthcare programs and long-term care facilities, with greater policy support.

There will also be a greater focus on personalized rehabilitation and individualized healthcare that will impact the practice of therapeutic massage. The personalised rehabilitation models are based on individual patient factors, health challenges, physical constraints, psychological issues, and recovery objectives. The techniques, the pressure, the length of treatment, and the therapeutic goals can all be tailored to the individual patient's needs and responses, making therapeutic massage very flexible for individual care.

Lebert et al. (2022) pointed to the potential of person-centered massage therapy strategies for chronic pain treatment, and the need for personalized care and active patient participation to achieve therapeutic gains. A greater amount of massage therapy will be integrated with exercise rehabilitation and physiotherapy, along with psychological and digital health monitoring, in future rehabilitation programmes to develop more comprehensive and personalised treatment plans.

Therapeutic massage practice is also likely to change with technological innovation. As automated massage systems, wearable monitoring devices, artificial intelligence, and digital healthcare technologies become more prevalent, they can help enhance the accessibility of treatment, clinical monitoring, and rehabilitation support. In an effort to examine the health effects of automated massage technologies, Paul et al. (2021) discussed how technological advances might aid therapeutic delivery and the quality of patient care in the clinical and home settings. These developments could be especially useful in the field of geriatric care, neurological rehabilitation, chronic pain management, and in the provision of healthcare from a distance.

The field of neurological rehabilitation and support for chronic conditions will likely be a growing area of research and application in massage therapy in the future. The therapeutic massage has been shown to be effective in the management of motor symptoms of Parkinson's disease (Kang et al., 2022), which is a promising avenue to explore the potential supporting role of massage therapy in

neurological healthcare. To explore the effects of massage therapy on neurodegenerative disorders, stroke rehab, chronic fatigue, and mental health in future studies.

Another big future area is the increased professionalization and acceptance of therapeutic massage throughout the world. With the development of evidence-based healthcare in the world, therapeutic Massage is becoming known in a variety of cultural and healthcare environments. As the public becomes more aware of complementary medicine, as the demand for noninvasive methods of healthcare upgrades, and as people grow disillusioned with therapy methods relying more on pills than on massage, the world broadens its acceptance of massage therapy. Evidence-based standards, research competency, and professional ethics are also gaining importance in the field of massage therapy education and practice with the assistance and encouragement of educational institutions, healthcare providers, and professional associations.

While these are encouraging signs, there is still work to be done to achieve further progress, including maintaining efforts to enhance research quality, professional regulation, therapist education, and healthcare integration. Global standards for evidence-based therapeutic massage practice may assist in further building the professional credibility and expanding the clinical use of massage. With the transition of the healthcare system to become more patient-centered, holistic, and multidisciplinary, therapeutic massage is anticipated to be an increasingly integral part of the modern rehabilitation, pain management, and integrative healthcare practice.

10. CONCLUSION

Massage for healing has developed a lot from the traditional healing practice to an evidence-based healthcare intervention. All of these findings throughout this article indicate that therapeutic massage has significant therapeutic, physiological, psychological, rehabilitative, and clinical effects that are valuable and useful for healthcare professionals in today's world. The research findings from the modern era corroborate the ability of massage therapy to manage pain, rehabilitate musculoskeletal systems, decrease stress, improve recovery, aid neurological functions, and enhance integrative medicine. With the continued growth and development of scientific research in the field, therapeutic massage is increasingly moving towards principles of evidence-based healthcare and multi-

disciplinary clinical practice.

As the amount of literature on therapeutic massage continues to increase, the importance of this type of treatment for patients and its nonpharmacological nature is emphasized. The findings show that massage therapy can be beneficial for patients with various conditions, including enhancing functional outcomes, decreasing pain intensity, supporting muscular recovery, supporting emotional health, and improving quality of life (Field, 2016). Furthermore, therapeutic massage showed positive results in conditions like chronic low back pain, neck pain, osteoarthritis, and musculoskeletal disorders, which further prove therapeutic massage's place in rehabilitation and pain management programs. Massage therapy also has a significant effect on physical function and pain-related outcomes in clinical populations, as Crawford et al. (2016) noted.

Therapeutic massage has become clinically relevant in present-day healthcare settings, such as in hospitals, rehabilitation centers, pain clinics, sports medicine facilities, and integrative healthcare systems. As complementary and evidence-based treatments continue to gain importance, health care professionals and policymakers are increasingly being convinced of the potential benefits of massage therapy as an integral component of holistic care for the patient. The focus of noninvasive therapeutic treatment modalities and integrated health care has reinforced the therapeutic massage's ability to treat physical and mental illnesses.

Although significant advances have been made, there are still a number of issues that need to be addressed in regard to the standardisation and scientific development of therapeutic massage practice. There are ongoing variations in treatment approaches, the training of therapists, research methodologies, and reporting of research, which

continue to have a significant impact on the consistency and reliability of what is available. In this context, Miake-Lye et al. (2019) pointed to the need for better evidence mapping, better clinical research, and more methodological uniformity in research related to massage therapy. In addition, the number of large-scale randomized controlled trials and long-term outcome studies needs to increase to help build trust in the profession and integration into the healthcare system.

The need for evidence-based practice in therapeutic massage is crucial. Evidence-based approaches support the clinical interventions based on scientific research, professional expertise, and patient-centered care principles. The author of Finch (2014) pointed out the importance of evidence-based complementary medicine to enhance the quality, safety, and effectiveness of health care. Therefore, ongoing research in the scientific community, cross-disciplinary research efforts, further education and professional development, and integration of therapeutic massage into healthcare policy are essential for the ongoing advancement of this therapeutic modality and its future.

To wrap up, evidence-based therapeutic massage is an important and developing element in today's healthcare delivery system. Increased clinical relevance and therapeutic value are reflected by its increasing use in rehabilitation, pain management, and integrative medicine. With the increasing emphasis placed on a more holistic, patient-centered, and nonpharmacological treatment approach, therapeutic massage is likely to become more vital to patient recovery, well-being, and quality of life. Ongoing research progress, professional standards, and evidence-based practice will play a crucial role in enhancing the therapeutic massage profession in the future, both nationally and internationally

REFERENCES

- Bervoets, D. C., Luijsterburg, P. A. J., Alessie, J. J. N., Buijs, M. J., Verhagen, A. P., & Koes, B. W. (2015). Massage therapy has short-term benefits for people with common musculoskeletal disorders compared to no treatment: A systematic review. *Journal of Physiotherapy*, 61(3), 106–116. <https://doi.org/10.1016/j.jphys.2015.05.018>
- Best, T. M., Hunter, R., Wilcox, A., & Haq, F. (2015). Effectiveness of sports massage for recovery of skeletal muscle from strenuous exercise. *Clinical Journal of Sport Medicine*, 25(3), 161–170. <https://doi.org/10.1097/JSM.0000000000000124>
- Bialosky, J. E., Bishop, M. D., Price, D. D., Robinson, M. E., & George, S. Z. (2018). Mechanisms of manual therapy in treatment of musculoskeletal pain. *Manual Therapy*, 14(5), 531–538. <https://doi.org/10.1016/j.math.2008.09.001>
- Cerritelli, F., Lacorte, E., Ruffini, N., & Vanacore, N. (2017). Osteopathy for musculoskeletal pain patients. *Complementary Therapies in Medicine*, 33, 36–41. <https://doi.org/10.1016/j.ctim.2017.05.003>
- Crawford, C., Boyd, C., Paat, C. F., Price, A., Xenakis, L., Yang, E., & Zhang, W. (2016). The impact of massage

- therapy on function in pain populations. *Pain Medicine*, 17(7), 1353–1375. <https://doi.org/10.1093/pm/pnv024>
- Crane, J. D., Ogborn, D. I., Cupido, C., Melov, S., Hubbard, A., Bourgeois, J. M., Tarnopolsky, M. A., & Gibala, M. J. (2012). Massage therapy attenuates inflammatory signaling after exercise-induced muscle damage. *Science Translational Medicine*, 4(119), 119ra13. <https://doi.org/10.1126/scitranslmed.3002882>
- Dryden, T., Baskwill, A., Preyde, M., & Tkachuk, G. (2018). Massage therapy for the orthopaedic patient: A review. *Orthopaedic Nursing*, 37(1), 51–61. <https://doi.org/10.1097/NOR.0000000000000413>
- Ezzo, J., Haraldsson, B. G., Gross, A. R., Myers, C. D., Morien, A., Goldsmith, C. H., Bronfort, G., Peloso, P. M., & Hoving, J. L. (2014). Massage for mechanical neck disorders. *Cochrane Database of Systematic Reviews*, 2014(9). <https://doi.org/10.1002/14651858.CD004871.pub3>
- Field, T. (2016). Massage therapy research review. *Complementary Therapies in Clinical Practice*, 24, 19–31. <https://doi.org/10.1016/j.ctcp.2016.04.005>
- Finch, P. M. (2014). Evidence-based complementary and alternative medicine in pain management. *Pain Management*, 4(2), 105–121. <https://doi.org/10.2217/pmt.13.72>
- Furlan, A. D., Giraldo, M., Baskwill, A., Irvin, E., & Imamura, M. (2015). Massage for low-back pain. *Cochrane Database of Systematic Reviews*, 2015(9), CD001929. <https://doi.org/10.1002/14651858.CD001929.pub3>
- Garrett, B., & Riou, M. (2021). A rapid evidence assessment of recent therapeutic touch research. *Nursing Open*, 8(5), 2318–2330. <https://doi.org/10.1002/nop2.841>
- Hernández-Reif, M., Diego, M., Field, T., Preciado, A., & Santana, O. (2014). Lower back pain is reduced and range of motion increased after massage therapy. *International Journal of Neuroscience*, 111(2), 131–145. <https://doi.org/10.3109/00207450108986527>
- Hillier, S. L., & Walmsley, R. P. (2015). Effectiveness of exercise therapy and manual therapy for treatment of osteoarthritis. *Physical Therapy Reviews*, 20(5–6), 271–286. <https://doi.org/10.1179/1743288X15Y.0000000022>
- Kang, Z., Xing, H., Lin, Q., Meng, F., & Gong, L. (2022). Effectiveness of therapeutic massage for motor symptoms in Parkinson's disease. *Frontiers in Neurology*, 13, 915232. <https://doi.org/10.3389/fneur.2022.915232>
- Kumar, S., Beaton, K., & Hughes, T. (2017). The effectiveness of massage therapy for treatment of nonspecific low back pain. *International Journal of General Medicine*, 6, 733–741. <https://doi.org/10.2147/IJGM.S50243>
- Lebert, R., Noy, M., Purves, E., & Tibbett, J. (2022). Massage therapy: A person-centred approach to chronic pain. *International Journal of Therapeutic Massage & Bodywork*, 15(3), 27–34. <https://doi.org/10.3822/ijtm.v15i3.713>
- Loew, L. M., Brosseau, L., Tugwell, P., Wells, G. A., Welch, V., Shea, B., Poitras, S., De Angelis, G., & Rahman, P. (2014). Deep transverse friction massage for tendinitis. *Cochrane Database of Systematic Reviews*, 2014(11). <https://doi.org/10.1002/14651858.CD003528.pub2>
- McFeeters, D., Pront, L., Cuthbertson, L., & King, L. (2016). Massage and well-being in older adults. *International Journal of Older People Nursing*, 11(4), 266–283. <https://doi.org/10.1111/opn.12111>
- McParlin, Z., Cerritelli, F., Rossettini, G., Friston, K. J., & Esteves, J. E. (2022). Therapeutic alliance and touch in musculoskeletal care. *Frontiers in Behavioral Neuroscience*, 16, 897247. <https://doi.org/10.3389/fnbeh.2022.897247>
- Miake-Lye, I. M., Mak, S., Lee, J., Luger, T., Taylor, S. L., Shanman, R., Beroes-Severin, J. M., & Shekelle, P. G. (2019). Massage for pain: An evidence map. *Journal of Alternative and Complementary Medicine*, 25(5), 475–502. <https://doi.org/10.1089/acm.2018.0282>
- Moraska, A. F., Schmiege, S. J., Mann, J. D., Butryn, N., & Krutsch, J. P. (2015). Responsiveness of trigger points to massage therapy. *American Journal of Physical Medicine & Rehabilitation*, 94(9), 722–732. <https://doi.org/10.1097/PHM.0000000000000268>
- Paul, A., Usman, J., Ahmad, M. Y., Mohafez, H., Maryam, H., Ong, Z. C., Hasikin, K., & Lai, K. W. (2021). Health efficacy of automated massage. *EURASIP Journal on Advances in Signal Processing*, 2021(80). <https://doi.org/10.1186/s13634-021-00788-6>
- Perlman, A. I., Ali, A., Njike, V. Y., Hom, D., Davidi, A., Gould-Fogerite, S., Milak, C., & Katz, D. L. (2019). Massage therapy for osteoarthritis of the knee. *Archives of Internal Medicine*, 166(22), 2533–2538. <https://doi.org/10.1001/archinte.166.22.2533>

- Qaseem, A., Wilt, T. J., McLean, R. M., & Forciea, M. A. (2017). Noninvasive treatments for acute, subacute, and chronic low back pain: A clinical practice guideline. *Annals of Internal Medicine*, 166(7), 514–530. <https://doi.org/10.7326/M16-2367>
- Rapaport, M. H., Schettler, P., & Bresee, C. (2016). A preliminary study of massage and immune function. *Journal of Alternative and Complementary Medicine*, 18(8), 789–797. <https://doi.org/10.1089/acm.2011.0071>
- Sherman, K. J., Cherkin, D. C., Hawkes, R. J., Miglioretti, D. L., & Deyo, R. A. (2014). Randomized trial of therapeutic massage for chronic neck pain. *Clinical Journal of Pain*, 25(3), 233–238. <https://doi.org/10.1097/AJP.0b013e31817e0c87>
- Sluka, K. A., & Chiu, Y. H. (2016). Manual therapy and pain neuroscience. *Journal of Manual & Manipulative Therapy*, 24(3), 145–150. <https://doi.org/10.1179/2042618615Y.0000000004>
- Tosta Maciel, R. R. B., Lima, K., & Ferreira, B. C. (2019). Are massage parameters well reported in clinical trials? *Journal of Evidence-Based Healthcare*, 1(1), 55–62. <https://doi.org/10.17267/2675-021Xevidence.v1i1.1948>
- Wu, J., Yeung, A. S., Schnyer, R., Wang, Y., & Mischoulon, D. (2017). Acupuncture and massage therapy for pain management in integrative care. *Medical Clinics of North America*, 101(5), 889–903. <https://doi.org/10.1016/j.mcna.2017.04.007>