

DOI: 10.5281/zenodo.18799064

THE PRESERVATION AND TRANSMISSION OF LYU OPERA IN BINZHOU CITY, SHANDONG PROVINCE, CHINA

Guodong Ying¹, Khomkrich Karin^{1*}, Peerapong Sensai¹

¹College of Music, Mahasarakham University, Thailand

Received: 11/12/2025
Accepted: 02/02/2026

Corresponding Author: Khomkrich Karin
(khomkrich.k@msu.ac.th)

ABSTRACT

This article investigates the Preservation and transmission of Lyu Opera in Binzhou City, Shandong Province, China. A qualitative research approach was adopted, using interviews and field observations as the main data collection methods. Respondents were interviewed on-site, and the data were thematically analysed. Lyu Opera originated from folk culture and is deeply rooted in the everyday lives of ordinary people, embodying rich cultural connotations and significant artistic value. Over more than a century of development, it has gained widespread popularity among local communities. However, rapid social transformation, the rise of the Internet era, and increasing cultural integration have profoundly altered its living environment, weakening traditional modes of performance, transmission, and audience engagement. As a result, public awareness and in-depth understanding of Lyu Opera have declined, posing unprecedented challenges to its preservation and transmission. This study examines and synthesizes key approaches to the preservation and transmission of Lyu Opera through integrated pedagogical, social, and technological strategies. It emphasizes systematic training, community-based participation, age-differentiated teaching models, and sustainable talent cultivation mechanisms, alongside the importance of institutional support, evaluation reform, and long-term resource development. Furthermore, the study highlights the crucial role of digital media in expanding dissemination while preserving the traditional aesthetic core of Lyu Opera, thereby contributing to its sustainable development in contemporary society.

KEYWORDS: Lyu Opera, Preservation, transmission, Chinese Traditional Culture.

1. INTRODUCTION

Lyu Opera is one of the most representative forms of traditional folk opera in Shandong Province, China, and constitutes an important component of the intangible cultural heritage of the Qilu region. Historically, Lyu Opera evolved from Shandong Qinshu and the melody of "Fengyang Song", while continuously absorbing the artistic essence of various local operatic genres across the Qilu cultural sphere. Through this long process of cultural integration, Lyu Opera has developed a distinctive artistic system characterized by simple and vivid language, melodious singing, rich dramatic expression, and strong emotional appeal, deeply rooted in the everyday life and folk culture of Shandong communities (Rong Rong, 2013).

Musically and theatrically, Lyu Opera demonstrates a unique synthesis of lyricism and narration, particularly embodied in the performance of the Dan (female role). The singing style emphasizes the expressive function of opera music through the interweaving of recitation and melody, thereby enhancing dramatic storytelling and emotional communication. At the same time, Lyu Opera vividly portrays the customs, values, and humanistic spirit of the Qilu region, forming a strong regional identity that distinguishes it from other Chinese operatic traditions. Through systematic analysis of singing forms, vocal styles, structural patterns of lyrics, and singing techniques, scholars have gradually constructed a theoretical understanding of Lyu Opera's vocal aesthetics and performance practice (Wei Lijuan, 2016).

Despite its profound cultural heritage and artistic value, Lyu Opera today faces serious challenges in preservation and transmission. Originating from grassroots society and reflecting the daily lives of ordinary people, Lyu Opera once maintained a close connection with local communities. However, under the rapid transformation of modern society, urbanization, changing cultural consumption patterns, and the impact of mass media, the living environment of Lyu Opera has been significantly altered. Traditional modes of apprenticeship, community-based performance, and oral transmission are gradually weakening, placing Lyu Opera at risk of cultural marginalization and decline (China Daily, 2024)

Binzhou City, located in the core area of the Qilu cultural region, has long served as an important base for the development and dissemination of Lyu Opera. In recent years, however, Binzhou's Lyu Opera has encountered increasing difficulties in talent cultivation, audience development,

performance opportunities, and sustainable inheritance mechanisms. These challenges highlight the urgent need for systematic research on the current conditions, problems, and future pathways for the preservation and transmission of Lyu Opera in this region.

Therefore, this study aims to investigate the present situation of Lyu Opera in Binzhou City, analyze the major challenges facing its preservation and transmission, and explore effective strategies for safeguarding and revitalizing this valuable cultural heritage. By integrating field investigation, performer interviews, and cultural policy analysis, the research seeks to contribute both theoretical insight and practical guidance for the sustainable development of Lyu Opera within contemporary society. (Zhang Guozhi, 2025)

2. RESEARCH METHODS

This study employed a qualitative research methodology to explore the current conditions, challenges, and developmental pathways of the preservation and transmission of Lyu Opera in Binzhou City, Shandong Province, China. The research was conducted over a period of 20 months, from June 2024 to February 2026, to allow for in-depth fieldwork, observation, and interviews within the natural social and cultural context of Lyu Opera. Binzhou City was selected as the research site due to its historical significance as one of the birthplaces of Lyu Opera and its strong operatic traditions. Purposive sampling was used to select key informants based on clearly defined criteria, including long-term engagement in Lyu Opera practice, recognized status as a successor, extensive performance experience, familiarity with local culture and dialect, and active participation in professional operatic activities. Based on these criteria, one key informant, Ms. Sun Xueying, a national-level Lyu Opera performer with more than 30 years of experience, was selected as the primary source of qualitative data. Her role as an important carrier of Lyu Opera transmission in Binzhou City provided valuable insights into both artistic practice and cultural inheritance.

2.1. Research Design

The research design integrated fieldwork investigation with extensive documentary and literature analysis. The study focused on Lyu Opera as a representative form of traditional folk opera deeply embedded in the cultural life of the Qilu region. Emphasis was placed on examining the mechanisms of cultural inheritance, modes of

performance transmission, institutional support systems, and community participation in Binzhou City.

2.2. Data Collection

Data for this study were collected through multiple qualitative methods in order to obtain a comprehensive understanding of the preservation and transmission of Lyu Opera in Binzhou City. The primary data collection techniques included semi-structured interviews, field observation, documentary and literature review, and audio-visual documentation. In-depth interviews were conducted with Lyu Opera performers, troupe leaders, cultural administrators, local scholars, and senior practitioners, focusing on their personal experiences, training processes, performance practices, and perceptions of the challenges facing Lyu Opera preservation and transmission. Direct field observations were carried out at performance venues, training centers, cultural events, and community activities related to Lyu Opera in Binzhou City, with particular attention given to performance forms, rehearsal processes, audience interaction, and institutional operations. In addition, academic publications, government cultural policy documents, archival records, and historical materials concerning Lyu Opera and regional opera culture were systematically reviewed to provide theoretical and contextual foundations for the study. Throughout the fieldwork period, extensive audio and video recordings of live performances, rehearsals, interviews, and community events were collected as primary materials for analyzing performance characteristics and transmission practices.

2.3. Research Procedure

The entire research process was organized into four interconnected phases. The first phase involved a comprehensive review of existing literature on Lyu Opera and traditional opera preservation, the formulation of research questions, and the development of interview and observation guidelines. The second phase consisted of on-site field investigation in Binzhou City, during which interviews, observations, and audio-visual documentation were conducted. In the third phase, qualitative data were systematically organized, categorized, and coded to identify key themes related to preservation mechanisms, transmission models, challenges, and development strategies. The final phase focused on interpretation and synthesis, in which the research findings were examined within

the broader frameworks of cultural heritage studies and performing arts research, leading to the formulation of practical recommendations for the sustainable preservation and transmission of Lyu Opera.

2.4. Research Reliability and Validity

To enhance the credibility of the research, data triangulation was applied by cross-verifying information obtained from interviews, observations, and documentary sources. Continuous comparison between field data and existing literature ensured analytical reliability and interpretive validity.

3. LITERATURE REVIEW

Binzhou City, located in the northern part of Shandong Province, lies at the heart of the Qilu cultural region, one of the most important cultural cradles of Chinese civilization. Shandong Province, positioned along China's eastern coast and the lower reaches of the Yellow River, has long served as a center of philosophical, political, and artistic development, being the birthplace of Confucian culture and a region of profound historical legacy. Binzhou's geographical setting, between latitudes 36°41' and 38°16' N, creates a favorable temperate and warm-temperate climate with four distinct seasons, fertile plains, and diverse ecosystems, forming ideal conditions for agricultural productivity, human settlement, and cultural flourishing. (Regional Chronicles of Binzhou City, 2002) Over centuries, these natural and social environments have shaped the distinctive cultural landscape of Binzhou and provided the foundational context for the emergence and continued vitality of Lyu Opera.

Historically, Binzhou was formally established during the Later Zhou Dynasty in 956 AD and gradually developed into a significant cultural center in northern Shandong. Throughout its long history, the city accumulated rich folk traditions and artistic practices, including the renowned Huimin Huji Book Fair, paper-cutting, clay sculpture, and woodblock prints, all of which reflect the creative wisdom and aesthetic sensibilities of local communities. Within this fertile cultural environment, Lyu Opera emerged as one of the most representative forms of folk opera in Shandong, deeply embedded in everyday social life and local customs. As both a product and a mirror of regional culture, Lyu Opera not only reflects the emotional world and moral values of the Qilu people but also functions as a key vehicle for the transmission of collective memory and cultural identity.

The operatic traditions of Shandong Province constitute a highly diverse and dynamic system. Among the various forms, including Shandong Clapper Opera, Liuzi Opera, elbow-drum opera, and folk song-based narrative operas, Lyu Opera stands out for its lyrical musical style, vivid storytelling, and close relationship with grassroots society. Its melodies are simple yet expressive, and its language is accessible, allowing audiences from different social backgrounds to engage easily with its narratives. In contrast, Shandong Clapper Opera is characterized by its bold vocal delivery and rhythmic intensity, while Liuzi Opera emphasizes refined musical structures and emotional subtlety. Together, these traditions form a complex cultural ecology that reflects the distinctive temperament and aesthetic orientation of the Qilu region. (Zhou Jingchun, 2020)

The historical development of Lyu Opera can be broadly divided into three major phases: origin, formation, and development. (Liu Chenran, 2008) Its earliest form emerged in the mid-nineteenth century from a folk rap-singing tradition known as “small tunes,” which was popular among farmers in the Yellow River Delta, particularly in areas that now belong to Binzhou and Dongying. These early performances combined simple melodic structures with narrative storytelling rooted in rural life. By the late nineteenth and early twentieth centuries, Lyu Opera gradually transformed into a fully developed theatrical genre through the incorporation of costumes, makeup, stage movement, and dramatic structure, while simultaneously absorbing performance techniques from other Chinese opera forms such as Peking Opera and Clapper Opera. The formal recognition of Lyu Opera as an independent operatic genre around 1910 marked a significant milestone in its artistic evolution.

During the twentieth century, Lyu Opera experienced a period of rapid expansion and artistic refinement. Professional troupes were established, repertoires diversified, and performance practices became increasingly standardized. Following the founding of the People’s Republic of China, state-supported reforms further elevated the ideological, educational, and artistic functions of Lyu Opera, producing a series of influential works, among which *Li Er’s Wife Remarried* is widely recognized as a landmark in the genre’s history. These developments enabled Lyu Opera to extend its influence beyond Shandong and gain national recognition. (Zhao Wenying, 2022)

However, since the late twentieth century, Lyu Opera has faced mounting challenges brought about by social modernization, urbanization, and the rapid

diversification of entertainment media. Traditional modes of transmission—based on apprenticeship, community participation, and long-term troupe affiliation—have been increasingly weakened. Audience structures have shifted, with younger generations showing declining interest in traditional opera, while economic pressures and institutional restructuring have affected the sustainability of professional troupes. (Zhang xu & Liu yufang & Mao ning & Li xingyue, 2025) In response, both governmental agencies and cultural practitioners have implemented preservation measures, including policy support, educational programs, documentation projects, and the designation of Lyu Opera as a national intangible cultural heritage item. These efforts have created new opportunities for revitalization, yet they also reveal the complexity of balancing cultural continuity with contemporary adaptation.

Existing scholarship thus emphasizes that Lyu Opera’s survival and development depend not only on artistic innovation but also on the reconstruction of its social environment, educational mechanisms, and cultural value systems. Preservation and transmission must therefore be understood as a comprehensive cultural process that integrates community participation, institutional support, policy guidance, and intergenerational engagement. (Ma Guangjian & Gao Shuzhong, 2004). This body of literature provides a crucial theoretical foundation for examining the current situation of Lyu Opera in Binzhou City and for exploring sustainable strategies that can ensure its continued vitality in the context of modern society.

4. RESEARCH RESULTS

4.1. *Preservation and Transmission Mechanisms of Lyu Opera*

Existing studies and field investigations indicate that the difficulties surrounding the preservation and transmission of Lyu Opera arise from both macro-level social transformations and micro-level artistic transmission mechanisms. These two dimensions are deeply interconnected and together shape the current challenges faced by Lyu Opera in Binzhou City. (Cui Yingqiu, 2019)

From a macro-social perspective, rapid modernization has significantly altered value systems, lifestyles, and learning patterns. Contemporary society increasingly prioritizes efficiency, speed, and immediate returns, which fundamentally conflicts with the long-term, systematic training required for traditional opera transmission. Under fast-paced social conditions, the

traditional master–apprentice model, characterized by prolonged immersion, repetitive practice, and gradual internalization of artistic principles, has become increasingly fragmented. As a result, the continuity of traditional transmission mechanisms has weakened, and the structural foundation supporting Lyu Opera inheritance has been destabilized.

At the micro level, deficiencies in artistic transmission—particularly in vocal techniques—have become increasingly evident. Breath control has long been regarded as the technical foundation of Lyu Opera singing, requiring stable diaphragmatic support and precise coordination with melodic structure. However, current training practices often prioritize stage exposure over foundational skill development. Young performers tend to neglect systematic breath training, leading to unstable sustained notes, disordered breathing in fast passages, and weakened expressive control. Moreover, the growing substitution of traditional vocal techniques with popular singing styles has resulted in the gradual loss of local timbral characteristics, causing vocal expression to become increasingly homogenized and detached from the distinctive aesthetic of Lyu Opera. (Zhu Yiwen, 2020).



Figure 1. performance at the scene of Lyu Opera.

Linguistic transmission also faces serious challenges. Traditionally, Lyu Opera singing relies heavily on regional dialect pronunciation, rhythmic articulation, and nuanced tonal inflection. The widespread use of Mandarin in education and daily communication has reduced young performers' sensitivity to dialectal features, resulting in deviations in pronunciation and weakened expressive power. Consequently, the linguistic charm and regional identity embedded in Lyu Opera singing are gradually being diluted. In addition, the

traditional coordination between singing and instrumental accompaniment has been compromised. Many performers increasingly rely on fixed musical scores and standardized accompaniment, lacking the flexibility required to handle variations in core musical structures such as the “four-flat” and “two-board” styles, which were once central to the genre's expressive richness. (Liu Junliang & Zhang Li, 2015)

Another critical issue concerns the growing utilitarian orientation of transmission mechanisms. Interviews with practitioners and educators reveal that Lyu Opera education has increasingly become instrumentalized, particularly within formal educational systems. In some cases, opera training is treated as a means of obtaining academic credentials, employment advantages, or policy-related benefits associated with intangible cultural heritage projects. This utilitarian mindset shifts attention away from artistic depth, aesthetic cultivation, and long-term commitment, weakening learners' motivation to engage in rigorous training and undermining the integrity of transmission chains.

This tendency is further reinforced by the integration of Lyu Opera preservation with tourism development and short-term cultural projects. While such initiatives may increase visibility, they often simplify traditional repertoires, compress performance procedures, and prioritize spectacle over artistic authenticity. As a result, essential techniques and stylistic subtleties risk being marginalized, threatening the long-term sustainability of genuine transmission practices.

Empirical survey data collected in 2025 further illustrate this problem. A questionnaire survey of 100 Lyu Opera learners revealed that non-interest-oriented motivations—such as academic advancement and employment pressure—accounted for 62% of learning participation, while only 38% of learners reported intrinsic artistic interest. The data indicate a clear tension between utilitarian education models and the principles of lifelong artistic cultivation. Under such conditions, learners tend to focus on certification and short-term outcomes rather than developing a deep understanding of vocal technique, role interpretation, and historical context, leading to a standardized and mechanized training process.

At the institutional level, the preservation and transmission mechanisms of Lyu Opera are further constrained by structural limitations. Official policy documents issued by the Culture and Tourism Bureau of Binzhou City acknowledge persistent problems, including talent shortages, aging

performer populations, insufficient innovation in transmission methods, and a shrinking audience base. The contraction of the performance market has weakened the connection between traditional repertoires and contemporary creation, while grassroots training systems remain underdeveloped. These factors collectively hinder the formation of a stable and sustainable transmission ecosystem.

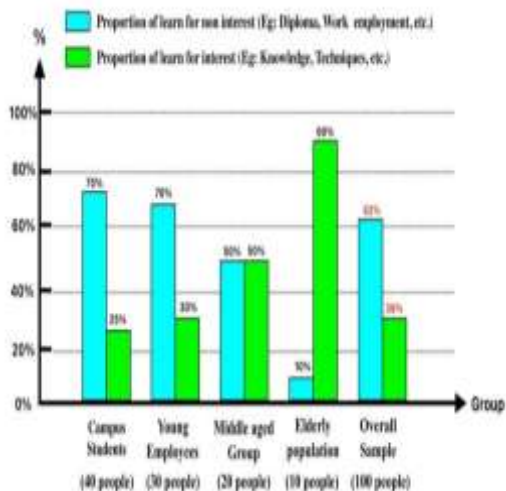


Figure 2. Proportion of different groups' interest and motivation in learn Lyu Opera.

In summary, the preservation and transmission of Lyu Opera are challenged by a complex interaction of social transformation, educational utilitarianism, technical discontinuity, and institutional constraints. Addressing these issues requires not only artistic refinement but also the reconstruction of transmission mechanisms that balance tradition, education, policy support, and contemporary cultural conditions.

4.1.1. The Singing Style in Local Traditional Ceremonies

The sustainable development of Lyu Opera in contemporary society requires comprehensive adaptation strategies that integrate educational reform, social participation, institutional support, and digital transformation. Field investigations and documentary analysis indicate that revitalizing Lyu Opera is not merely a matter of artistic innovation but fundamentally depends on the reconstruction of transmission mechanisms that correspond with the structural conditions of the digital era. (Wang Jing, 2017)

At the educational and pedagogical level, effective adaptation demands the establishment of long-term and phased learning systems that counterbalance the fragmented learning patterns characteristic of modern society. Traditional opera

training, which requires prolonged immersion and continuous refinement of basic techniques, must be restructured into progressive modules that allow learners to gradually develop artistic perception, technical stability, and stylistic awareness. Age-differentiated teaching models have proven particularly effective in enhancing sustainability: youth-oriented programs prioritize systematic technical transmission and foundational skill development, while programs for older learners emphasize cultural participation, appreciation, and experiential engagement. Such stratified teaching frameworks contribute to the formation of a stable and inclusive transmission ecology. (Du Ning, 2013).



Figure 3: Activities for teaching Lyu Opera to youth and educational institutions.

At the social level, sustainable development depends on embedding Lyu Opera within community life and public cultural services. Community cultural centers, educational institutions, and local performance spaces serve as critical platforms for facilitating regular engagement between the art form and the public. By offering experiential courses, workshops, and interactive programs, these institutions strengthen cultural identification and expand the social foundation of Lyu Opera beyond professional circles. (Liu Hongbing & Chen Jieyu, 2007)

From an institutional perspective, the establishment of multidimensional talent cultivation systems forms the foundation for the long-term sustainability of Lyu Opera. Such systems incorporate continuous professional development for instructors, structured involvement of veteran performers in training processes, and stable funding mechanisms that support artistic continuity. Equally critical is the reform of evaluation frameworks so that the effectiveness of cultural transmission—rather than short-term performance output—becomes a central criterion in educational assessment and

professional advancement. The integration of traditional master-apprentice models with modern educational administration further reinforces both technical authenticity and organizational resilience.

Digital transformation, meanwhile, functions as a decisive force in adapting Lyu Opera to contemporary cultural conditions. Through new media platforms, online learning systems, and digital archives, Lyu Opera gains unprecedented capacity for dissemination, documentation, and audience expansion. These tools enable the art form to transcend geographical limitations, engage younger generations, and diversify modes of cultural communication. At the same time, sustainable digital integration requires maintaining the aesthetic integrity of Lyu Opera while innovating its presentation formats. The systematic preservation of veteran performers' techniques, the development of open-access learning resources, and the production of immersive audiovisual content ensure that technological advancement strengthens rather than dilutes artistic identity. (Lyu Hanshu & Li Shuo, 2024)

Government policy and institutional governance provide the structural environment within which these transformations can be stabilized. Contemporary cultural policies emphasize long-term strategic planning, systematic transmission mechanisms, and the enhancement of public cultural awareness. By aligning preservation goals with modern cultural industries and public service systems, Lyu Opera is positioned to evolve within a balanced framework that harmonizes tradition with innovation.

Taken together, these dimensions—pedagogical reform, community engagement, institutional restructuring, digital integration, and policy support—do not function in isolation. Rather, they operate as interdependent components within a coherent developmental system. Their coordinated interaction establishes the structural logic that underpins the conceptual framework of this study, enabling the identification of problems, formulation of guidelines, mobilization. (Shandong Provincial Department of Culture and Tourism, 2024).

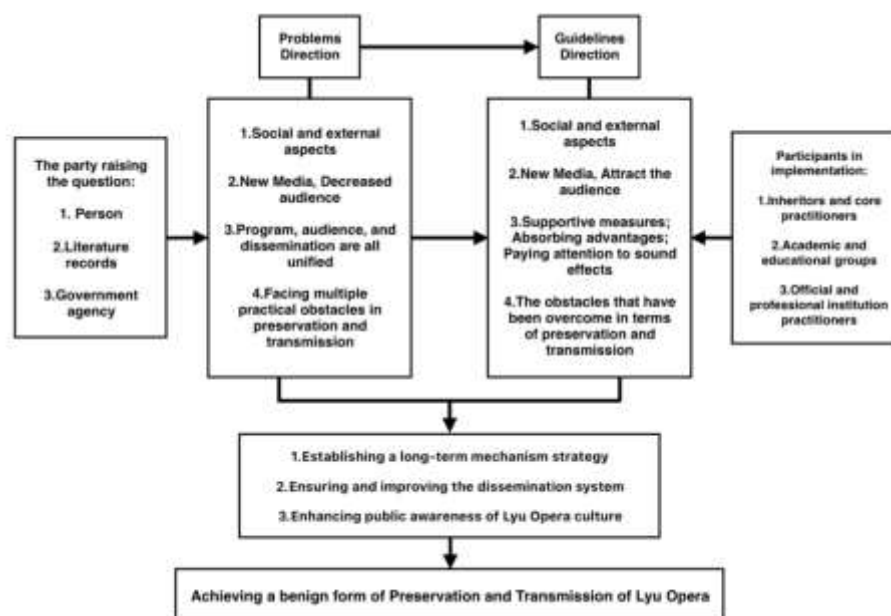


Figure 4. Problems and Guidelines Regarding Preservation and Transmission of Lyu Opera.

The conceptual framework presents a comprehensive structure for understanding the preservation and transmission of Lyu Opera in contemporary society. It integrates perspectives from practitioners, academic literature, and government agencies to identify key problems affecting the sustainability of Lyu Opera, including social and external pressures, declining audiences under the influence of new media, fragmentation of

dissemination mechanisms, and multiple practical obstacles in the transmission process.

In response, the framework proposes systematic guidelines that emphasize social support, effective utilization of new media to expand audiences, institutional and artistic reinforcement, and continuous improvement of preservation mechanisms. These strategies are implemented collaboratively by inheritors and practitioners,

educational institutions, and professional cultural organizations.

Through the coordinated interaction of problem identification, strategic guidance, and multi-sector participation, the framework aims to establish long-term preservation mechanisms, strengthen dissemination systems, and enhance public awareness of Lyu Opera culture, ultimately achieving a sustainable and balanced model for its preservation and transmission in the modern era.

4.2. Discussion

In accordance with the third research objective concerning the preservation and transmission of Lyu Opera, this study further examines its findings through a comparative analysis between the case of Lyu Opera in Binzhou City and existing research on the digital transformation of Huangmei Opera (Bai Xuesong & Shao Zhengqi, 2025). In the study *Digital Survival Paths of Local Opera in the Context of Intangible Cultural Heritage*, demonstrates how digital technologies such as 3D modeling, artificial intelligence, and the construction of “sound-spectrum synchronization” databases have significantly enhanced the documentation, dissemination, and public accessibility of Huangmei Opera. These strategies provide valuable reference points for addressing the challenges currently facing Lyu Opera.

The findings of the present study indicate that the preservation and transmission mechanisms of Lyu Opera are constrained by multiple structural problems, including the fragmentation of traditional training systems, the weakening of technical continuity, the growing utilitarian orientation of learning motivations, and the shrinking of audience bases. Similar problems have been documented in the development of other Chinese local operas (Zhang Wenwen, 2020; Pan Yu, 2019). However, the comparative case of Huangmei Opera demonstrates that digital intervention, when guided by appropriate institutional and educational reforms, can significantly mitigate these difficulties.

Specifically, Huangmei Opera’s experience suggests that digital documentation technologies – such as high-precision audio recording, motion capture, and AI-based sound analysis – can effectively preserve the vocal techniques, dialectal features, and performance nuances that are most vulnerable to disappearance in Lyu Opera. The establishment of a “sound-spectrum synchronization” database offers a scientific foundation for preserving traditional singing systems, enabling performers and researchers to

conduct detailed comparative analysis across generations of artists (Liao Ben, 2024). Applying such methods to Lyu Opera would directly strengthen its technical transmission mechanisms and support the reconstruction of a stable training system.

At the same time, the digital dissemination strategies employed in Huangmei Opera illustrate how local opera can expand its audience base and enhance public engagement in the new media environment. Online performance platforms, digital archives, and interactive learning systems have enabled Huangmei Opera to transcend geographical boundaries and attract younger generations, a demographic group that Lyu Opera is currently struggling to reach. Similar outcomes have been observed in the digital promotion of Peking Opera and Yue Opera, where multimedia integration significantly increased audience participation and cultural visibility (Wang Juan, 2024; Yang Qian, 2025).

Furthermore, the Huangmei Opera model demonstrates the importance of institutional coordination in ensuring sustainable adaptation. Digital innovation alone is insufficient without complementary reforms in talent cultivation, evaluation mechanisms, and policy support. This finding resonates with the present study’s conclusion that the sustainable development of Lyu Opera depends on the coordinated interaction of pedagogical innovation, institutional restructuring, community participation, and digital integration. Government policy frameworks emphasizing long-term development strategies and systematic transmission systems provide the necessary structural conditions for these reforms (Zhang Meng, 2025).

In this regard, the experience of Huangmei Opera offers a transferable framework for Lyu Opera’s future development: combining technological preservation with educational reform, institutional support, and audience-oriented dissemination. Such an integrated model aligns closely with the two core thematic directions identified in this study – the reconstruction of preservation and transmission mechanisms and the sustainable adaptation of Lyu Opera in the digital era. Through this synthesis, Lyu Opera is positioned not only to safeguard its artistic heritage but also to reestablish its cultural relevance and social vitality within contemporary society.

5. CONCLUSION

This study examined the preservation and transmission of Lyu Opera in Binzhou City, Shandong Province, China, through a qualitative

approach integrating field observations, interviews, documentary analysis, and survey data. The findings indicate that Lyu Opera is currently facing multidimensional challenges stemming from social transformation, weakened master-apprentice transmission systems, discontinuities in vocal and dialect techniques, and changing cultural consumption patterns. These issues are compounded by aging performers, shrinking audiences, and limited innovation at the grassroots level, all of which threaten the continuity and artistic integrity of the genre.

The study further demonstrates that the sustainable development of Lyu Opera depends on the reconstruction of its transmission mechanisms to align with contemporary conditions. Key strategies include the establishment of long-term and phased educational systems, age-differentiated teaching models, integrated talent cultivation frameworks, and reformed evaluation systems that emphasize transmission effectiveness rather than short-term

performance outcomes.

Digital transformation is identified as a crucial driver of sustainability. The use of digital archives, new media platforms, and online learning systems can broaden dissemination, enhance youth engagement, and strengthen public participation while preserving the core aesthetics of Lyu Opera. These efforts require strong governmental and institutional support through long-term policy planning and systematic governance.

Based on these findings, this study proposes a conceptual framework that integrates pedagogical innovation, community participation, institutional restructuring, digital integration, and policy support. The preservation of Lyu Opera is therefore not only an artistic endeavor but a shared cultural responsibility. By balancing tradition with innovation, Lyu Opera can continue to develop sustainably as an important element of China's intangible cultural heritage.

Acknowledgements: The author would like to express sincere gratitude to Mahasarakham University and the College of Music for providing a supportive academic environment, scholarly guidance, and essential facilities that contributed to the completion of this study. Appreciation is also extended to colleagues, experts, and all individuals who offered academic insight, professional assistance, and constructive feedback throughout the research process. Their support and encouragement were invaluable to the successful development of this research.

REFERENCES

- Bai, X. S., & Shao, Z. Q. (2025). Research on the dissemination effect, problems and countermeasures of Huangmei opera among college students. *Journal of Anhui Business College*, (3), 65-70.
- Cui, Y. Q. (2019). Analysis of the current situation and problems in the transmission of Lyu opera in the construction of grassroots culture. *Knowledge Library*, (7), 18.
- Du, N. (2013). A preliminary exploration of the path of opera education. *China Education Innovation Herald*, (29), 187.
- Liao, B. (2024). Expectations for the dissemination and development of Huangmei opera. *Chinese Art Studies Collection*, (1), 1.
- Liu, C. R. (2008). Research on the history, current situation and development of Lyu opera. *Cultural Education Materials*, (18), 82-84.
- Liu, H. B., & Chen, Y. J. (2007). Develop the cultural industry of Lyu opera to build the city's cultural brand. *Dongying Daily*, (1), 1.
- Liu, J. L., & Zhang, L. (2015). Discussing the standardization and uniformity of Lyu opera language. *Humanistic World*, (10), 12-13.
- Lyu, H. S., & Li, S. (2024). The philosophical connotations and humanistic reflections of Lyu opera. *Comedy World*, (11), 13-15.
- Ma, G. J., & Gao, S. Z. (2004). Lyu opera: The cultural brand of Binzhou and Boxing. *Chinese Theatre*, (4), 1.
- Pan, Y. (2019). The development and challenges of Lyu opera art. *Home Drama*, (8), 21-23.
- Rong, R. (2013). Exploring the development of Lyu opera art. *Big Stage*, (8), 12-13.
- Wang, J. (2017). The transmission value and protection of Shandong Lyu opera. *Appreciation*, (4), 22-31.
- Wang, J. (2024). Research on the current situation and transmission paths of Huangmei opera. *Home Drama*, (10), 24-44.
- Wei, L. (2016). From "Shandong Qin Book" to "Lyu opera". *Contemporary Music*, (12), 62-64.
- Yang, Q. (2025). Exploration of innovative dissemination of Peking opera art under the enrichment of creativity. *Creative Editing in the Media Context*, (1), 84-85.

- Yu, X. A. (2020). Regional chronicles of Binzhou City (Vol. 4, p. 22). CPC Binzhou Municipal Committee Party History Research Institute; Binzhou Local History and Chronicles Research Institute.
- Zhang, G. Z. (2025). Innovative practice research on the transmission and development of Lyu opera culture: Taking Boxing County as an example. *New Legend*, (32), 42-44.
- Zhang, M. (2025). An exploration of the transmission and development path of Shandong Lyu opera in the new era. *New Legend*, 11, 111-113.
- Zhang, W. W. (2020). Research on the present situation and countermeasures of Shandong Lyu opera dissemination. *Shandong University of Arts Journal*, (1), 97.
- Zhang, X., Liu, Y. F., Mao, N., & Li, X. Y. (2025). Application and reflection on research methods in the field of digital humanities in China. *Library and Information Service*, (16), 139-150.
- Zhao, W. Y. (2022). Watch the Lyu opera "Li Erh's Second Marriage". *Home Drama*, 2, 38-39.
- Zhou, A. H. (2018). Thoughts on the development of Lyu opera. *Chinese Drama*, (12), 48-50.
- Zhu, Y. W. (2020). Analysis of Lyu opera development from the perspective of multimedia integration. *China National Exhibition*, (22), 134-136.
- China Daily. (2024, May 3). Lyu opera. *China Daily Regional*.
https://regional.chinadaily.com.cn/shandong/dongying/2024-05/03/c_975345.htm
- Shandong Provincial Department of Culture and Tourism. (2024, November 26). Telling the story of the Yellow River: Innovative practice in the full chain of creation, performance and promotion of Lyu opera.
http://whhly.shandong.gov.cn/art/2024/11/26/art_352752_10343718.html